

**Motic®**

MORE THAN MICROSCOPY

## MOTICAMS1

### USB CAMERAS

The new Motic sCMOS cameras developed by German engineering represent a new impetus to manufacturing quality, technical precision and lightweight design. With a member of this line the door for new application fields opens wide. The accelerated data readout (Rolling Shutter) also enables to work on fast moving phenomena.

The Moticam S1 as entry model with the new back-illuminated sensor and speedy data transfer (excellent framerate up to 120 fps) makes any picture capturing easy. Convert your images in reproducible files: share or print like a professional.



[www.moticamseries.com](http://www.moticamseries.com) | [www.moticeurope.com](http://www.moticeurope.com)

## SCIENTIFIC CMOS CAMERA





## MOTICAMS1 TECHNICAL SPECIFICATIONS

<b>Sensor type</b>	sCMOS
<b>Sensor size</b>	1/3"
<b>Imaging area</b>	6.09mm (Diagonal)
<b>Capture resolution</b>	1.2MP
<b>Live display mode through USB</b>	1280x960, 640x480 pixels
<b>Pixel size</b>	3.75x3.75µm
<b>Scan mode</b>	Progressive
<b>Shutter mode</b>	Rolling Shutter
<b>Data transfer</b>	USB 3.1
<b>Max. frames per second (fps*)</b>	1280x960 @ 120fps 640x480 @ 240fps
<b>Exposure time</b>	15 µsec to 2 sec
<b>Operating temperature</b>	From -10 to +60 Degrees Celsius non condensing
<b>Sensitivity</b>	2350mV(G) @ 1/30 sec
<b>Support device</b>	TWAIN, SDK and DirectShow Driver
<b>Supported OS</b>	Microsoft Windows 7/8/10, MAC OSX10.9, Linux or higher
<b>Minimum computer requirements</b>	2GHz dualcore - RAM memory 2GB - Video memory min. 512 MB
<b>Lens mount</b>	C-Mount
<b>Software</b>	Motic Images Plus 3.0 for Windows, OSX and Linux
<b>Functions</b>	Still image and video capture, live and still image measurement, image adjustments, white balance, automatic & manual exposure, individual objective calibration system.
<b>Power supply</b>	5V (from USB Port)
<b>Package includes</b>	CS ring adaptor, USB 3.1 cable, Motic 4-dot calibration slide, Motic Images Plus 3.0 for PC/OSX/Linux

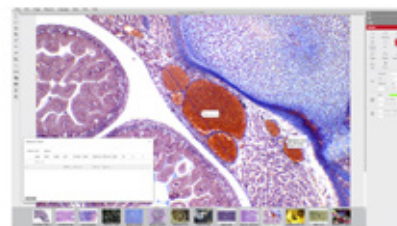
*\*Frames per second under optimal lighting conditions and in compliance with computer technical requirements.*

**MOTIC IMAGES PLUS 3.0 IMAGE ANALYSIS SOFTWARE**

**Grab your image with highest sensor sensitivity. Navigate in the dark!**

### Motic Images Plus 3.0

By connecting your Moticam to your computer you will be able to work with our well-known software that comes included in the package. View, capture, edit, measure, make reports... all its standard features and the new ones packed in a new user-friendly interface.



**FAST FRAME RATES**



**sCMOS SENSOR**



**USB 3.1 INTERFACE**



**MIP 3.0 SOFTWARE**